

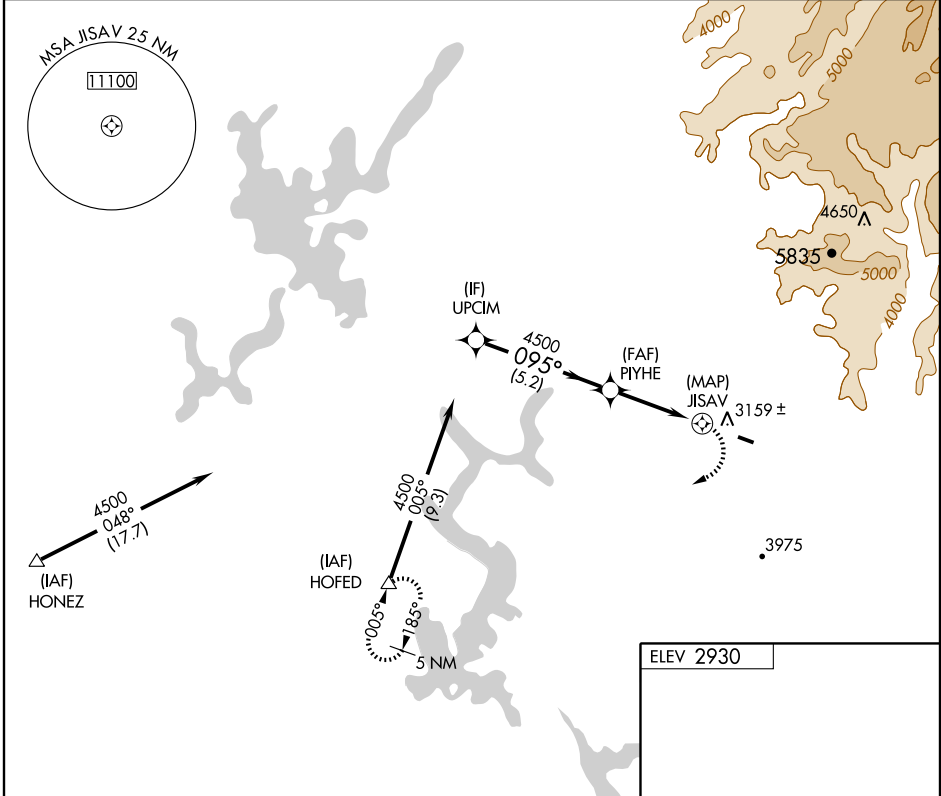
**RNAV (GPS) RWY 9**  
GROVELAND/PINE MOUNTAIN LAKE (E45)

APP CRS	Rwy Idg	<b>3625</b>
<b>095°</b>	TDZE	<b>2919</b>
	Apt Elev	<b>2930</b>

**▽** DME/DME RNP-0.3 NA.  
**△** NA Use Columbia altimeter setting; If not received, use Castle altimeter setting and increase all MDA's 560 feet.

MISSED APPROACH: Climbing right turn to 7000 direct HOFED and hold, continue climb-in-hold to 7000.

OAKLAND CENTER <b>121.25 327.0</b>	CTAF <b>122.9 0</b>
---------------------------------------	------------------------



SW-2, 11 FEB 2010 to 11 MAR 2010

SW-2, 11 FEB 2010 to 11 MAR 2010

